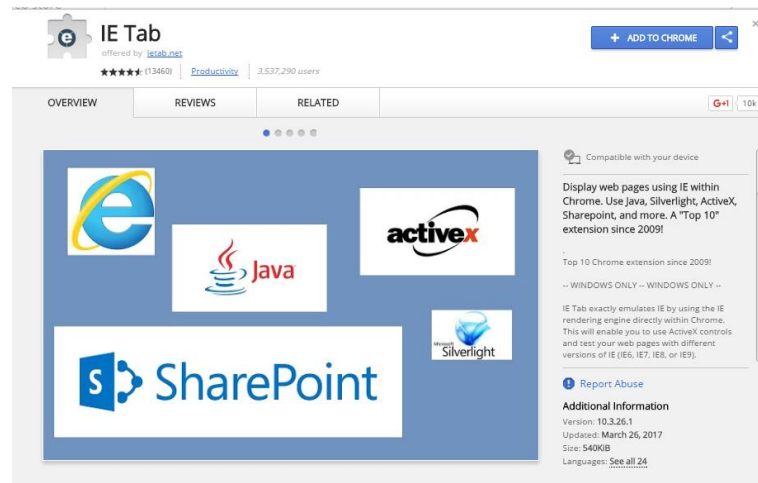
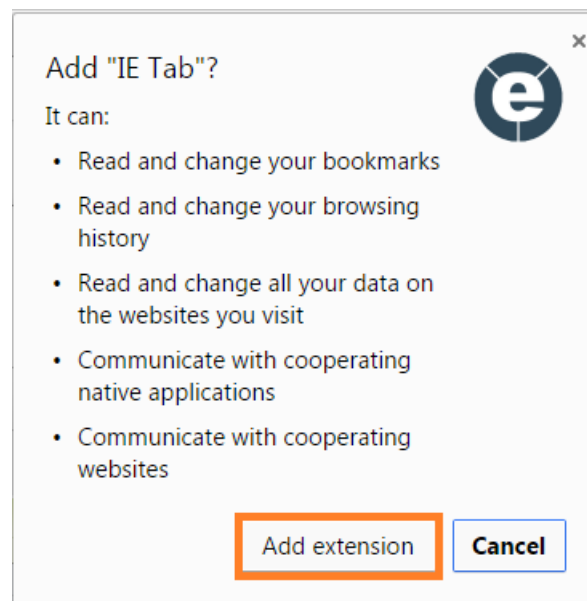


DVR Remote Viewing From Google Chrome

1. Open Google Chrome
2. Visit this website: https://chrome.google.com/webstore/detail/ie-tab/hehijbfgiekmjfkfjpbkbammjbdenadd?hl=en-US&utm_source=chrome-ntp-launcher
3. Click on “Add to Chrome”.

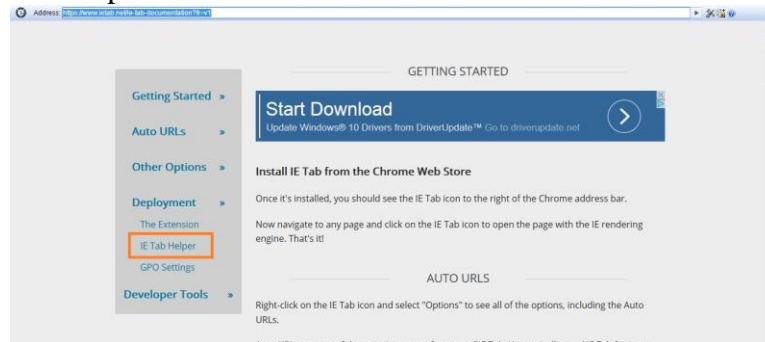


4. When prompted, click “Add extension”.

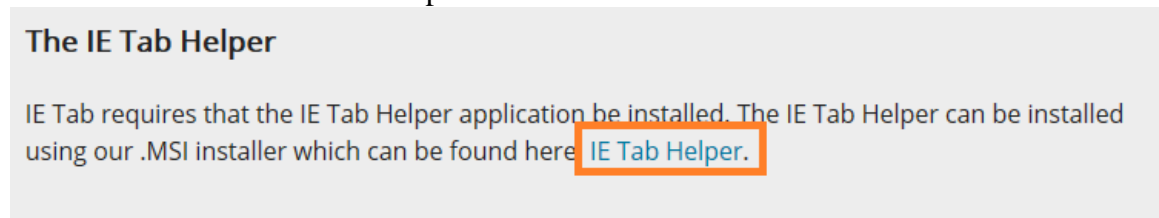


5. The “IE tab” extension has been added to Google Chrome.

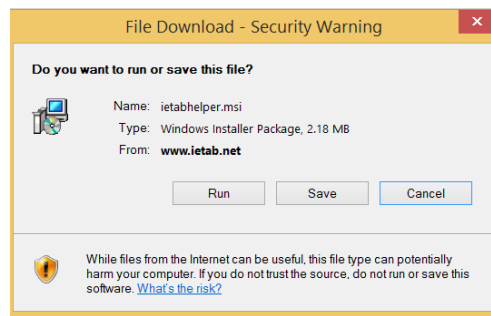
6. Click “IE Tab Helper” in the left side bar.



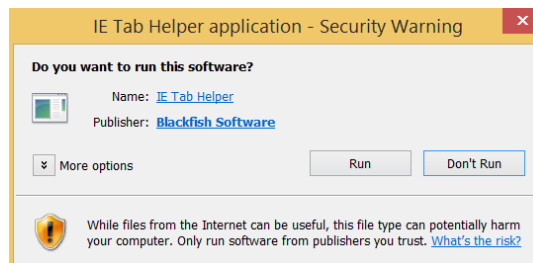
7. Click on the blue “IE Tab Helper” link.



8. Click “Run”



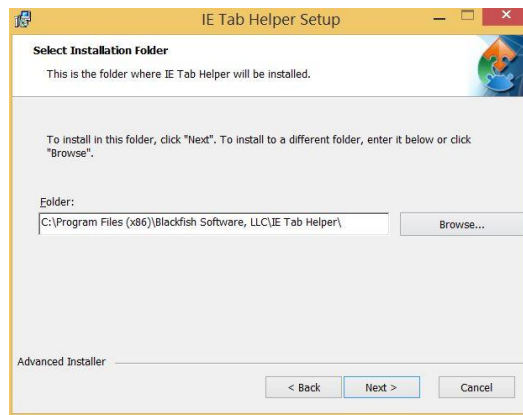
9. Click “Run”



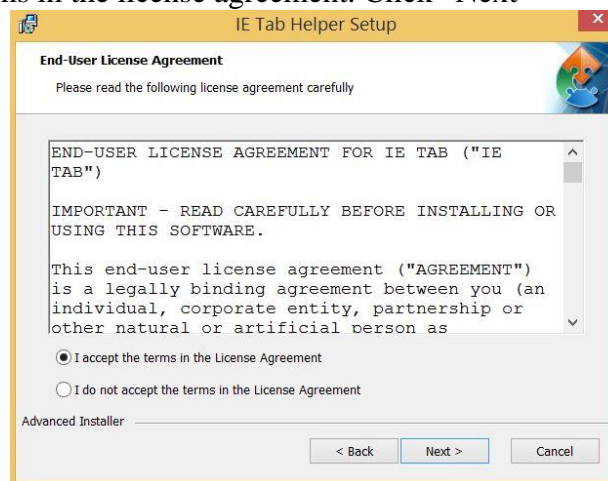
10. Click "Next"



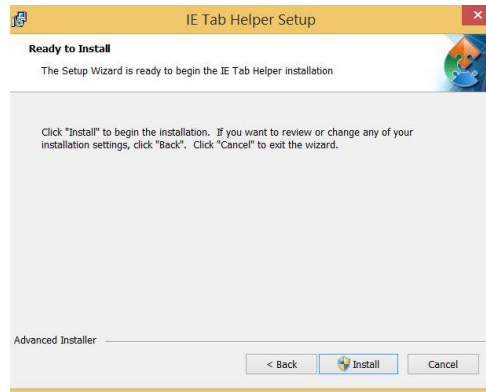
11. Click "Next"



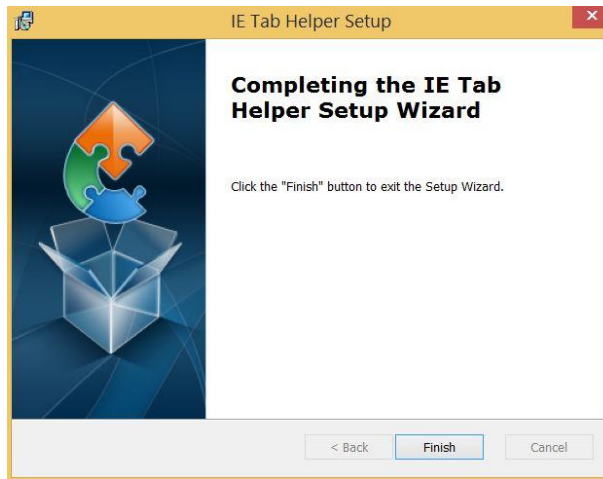
12. Accept the terms in the license agreement. Click "Next"




13. Click “Next”

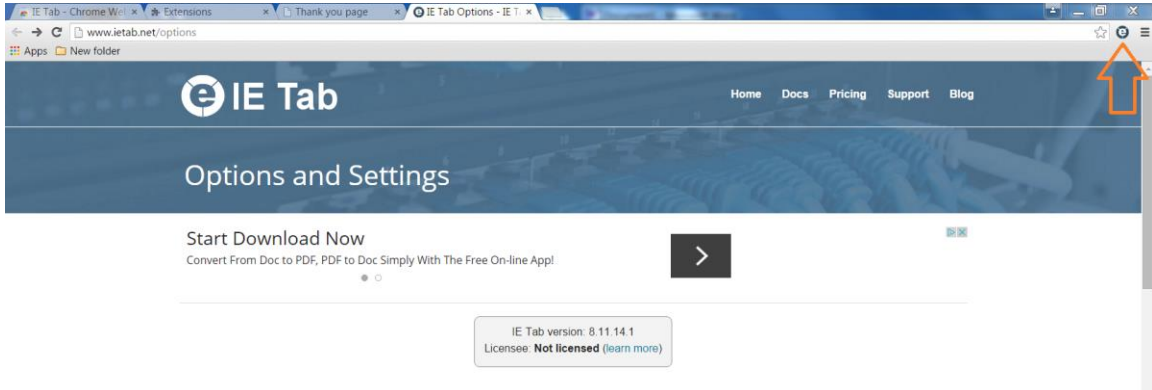


14. Click “Finish”

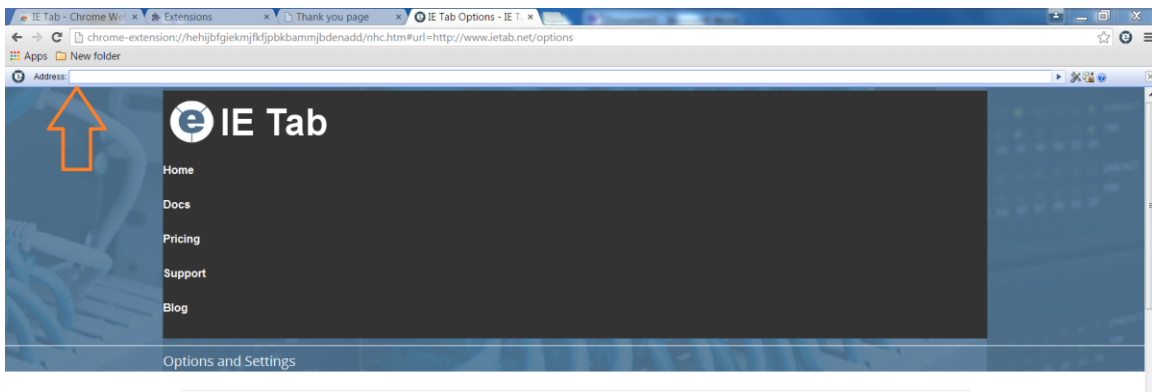


For DVR remote view from Google Chrome

1. Open Google Chrome
2. Click on the  icon in the upper right hand corner of the window.



3. Enter DVR IP address in the "Address" box. Press "Enter" on keyboard.



4. Enter log-in information.

